

HELIOS*

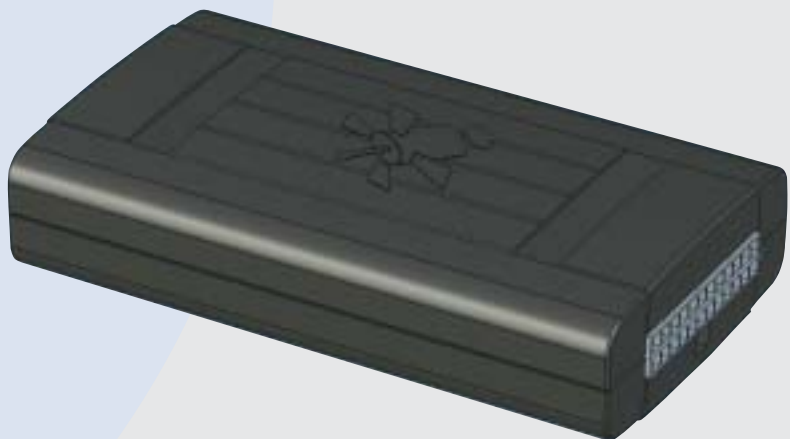
The most sophisticated unit for real-time fleet management and security applications.

The comedian Sid Caesar once said: "The guy who invented the first wheel was a fool. The guy who invented the other three, he was a genius!"

We at Starcom System didn't invent the car location system. We invented the "other three wheels" that totally changed the world of car location and raised it to perfection.

Our products are fully adjusted to every need:

They are fully customized to alert one of any type and combination of events, they enable automatic operation, and maintain stability and continuity.



*** Helios – the Ruler of the Sun, believed to be the "All-seeing" - according to early Greek mythology.**

It is the only system that provides solutions to every conceivable need. The intrinsic advanced wisdom in the Helios enables us to offer you the useful information in a very practical and user-friendly way, that even the most complicated analysis automatically becomes simple and easy to use.

By using **HELIOS** products:

🕒 You are in control

of every possible circumstance or situation. The open system and is a platform that allows integration of every situation both simple and complicated.

For example:

You can define a request to change the broadcasting frequency automatically, the moment a car enters a specific area and the door is opened.

🕒 You enjoy the easy and convenient use

of the system, due to its all-in-one solution base; its easy and simple installation; its integration with the local surroundings of the car; its flexibility to local needs; its compact size that includes built-in antennas; its infinite applications; and its opportunities to broaden its future applications.

🕒 You save

time and money because of the possibility to define different frequencies of transmission according to the local broadcast or Roaming.

🕒 You are confident

that in the event of an unusual situation the system will automatically be activated.

For example:

At the time of an accident, the system will automatically unlock the doors and beep every pre-set amount of minutes to identify the location of the car.

🕒 You maintain stability

due to the state of the art OTA (over the air) ability to remotely upgrade the unit with new features and fix the existing firmware of the unit. Thereby, there is constant communication with the car even in the event of a malfunction. This system and the Helios products can be used in more than 50 countries worldwide.

🕒 You can take advantage

of the high quality of the system which complies with the Automotives industry standards.

Main Specifications

CPU	Type Memory:	NXP(Philips) 32-bit ARM7 Static RAM: 128kb ROM: 34kb Flash: 2048kb
Power	Voltage Range Consumption	8v – 28v (supported in same unit) 1mA(sleep mode) – 92mA(transmit)
* Backup Battery (optional)	Type Power	Lithium-ion Polymer 3.75v 980-1200 mAh
GPRS - Cellular Modem	GSM Antenna type Network Channels	Quad Band (850, 900, 1800, 1900). Built in (concealed) GSM, GPRS, SMS,
Data Messages	SMS GPRS	Encrypted Protocol TCP/IP over PPP
Local COMM (check per model)	Type	ZIGBEE
GPS	Protocol Type Time to First Fix (TTFF) Positioning Accuracy Antenna type	NMEA(Binary) 12 sec (hot start) 10m CEP (50%) Velocity:0.2m/s (50%) Built in (concealed)
COMM Port	Type Speed	RS232 115,200bps (default)
I/Os (check per model)	Digital Inputs Digital Outputs Analog Inputs Pulses Counter CANBus	Max 5 Max 4 Max 2 Max 1 Check
Accelerometer (check per model)	Type Purpose	4-Axis, 0.1g resolution Identify and report events of impact, accident
Alarm System	Immobilizer Disarming Options	External – Gradual Stop Key Pad, Dallas Key, Remote Control
Dimensions	Size Weight	21H x 60W x 107L(mm) 0.82H x 2.36W x 4.21L (inch) 150 (grams) 3.52 (Oz)
Environmental	Operating Temp Storage Temp Humidity	-40°C (-40°F) - 60°C (140°F) -40°C (-40°F) - 85°C (185°F) Max 50%

Industry Approvals



Key Features

Fleet

- ◉ **Programmable Events:** Events can be defined to both transmit and act on complex events. For example – activating the horn and transmitting when a tanker truck activates its engine while unloading fuel at the fuel depot.
- ◉ **Speed restrictions:** Programmable alerts whenever the vehicle goes above/below a pre-defined speed, to detect over hastiness, and unauthorized stops.
- ◉ **Mileage:** Ability to alert every specific number of kilometers.
- ◉ **Motor is running while stationary:** Alert when the motor is running and the vehicle is left stationary at a specified time range.
- ◉ **Perimeter based alerts:** Geo-fencing alerts when a vehicle is entering/leaving/not entering/not leaving a specified area at a specified time.
- ◉ **Values Monitoring:** Monitoring of analog inputs to alert when voltage/temperature are exceeding.
- ◉ **Driver Identification:** By using different Dallas iButton, Remote Controls, or Keypad Codes, the unit sends the code of the current vehicle driver to the center.
- ◉ **Mileage Transmissions:** Periodic mileage transmissions for the needed vehicle's maintenance.
- ◉ **Automated Tracking:** Automatic support for vehicle tracking at specified time, without sending additional commands to the vehicle.

Alarm System

- ◉ **Complete Security System:** Complete operational security system with different logic states to detect break-ins and report to the center.
- ◉ **Times Programming:** Complete control over the alarm system timing (the intervals at which the unit stays at each of the alarm system logic modes).
- ◉ **Towing Detection:** GPS-based detection of movement while the system is armed produces a towing alert to the center.
- ◉ **Low Power Warning:** Warning transmission whenever the vehicle's main power goes below a predefined threshold.
- ◉ **4 Disarming Devices:** Four disarming devices are available, including keypad, remote control, remote control with keypad on-board, and Dallas iButton.

- ◉ **Unauthorized Code Alert:** Alert when unauthorized code has been used by an unauthorized disarming device.
- ◉ **Gradual Stop:** Option to gradually stop the vehicle by sending pulses to the immobilizer or fuel pump.

Vehicle and Driver Protection

- ◉ **Emergency Button:** Support for emergency button to invoke an immediate high-priority transmission to the center.
- ◉ **Accident and Harsh Braking Detector:** Built-in accelerometer serves as both accident and a harsh braking detector.
- ◉ **Auto Lock:** Support for locking/unlocking the doors whenever the motor is starting/stopping.

Inputs/Outputs

- ◉ **5 Digital Inputs:** Five digital inputs, usually used for Ignition, Emergency, Doors, Arming, and Disarming.
- ◉ **1 Pulse Counter Input:** To measure odometer pulses, or any sort of pulses generated by external devices.
- ◉ **Inputs programming:** Each input can be programmed to be used in order to trigger transmissions under any condition, and to arm or disarm the security system.
- ◉ **2 Analog Inputs:** Two analog inputs, each can be set to work in two different measurement scales. Example usages are be with temperature sensors and fuel measurement without the need for external sensor.
- ◉ **Main power indication:** A main power measurement to indicate the vehicle's battery voltage.
- ◉ **Canbus connection:** Direct connection to the vehicle's computer using the Canbus protocol.
- ◉ **Odometer Support:** Support for digital odometer to read its pulses and calculate the vehicle's mileage.
- ◉ **4 Digital Outputs:** Usually used for Lock, Unlock, Siren, and Immobilizer.
- ◉ **Pulses Width Modification:** Ability to set the width and number of the lock and unlock pulses.

Communication

- ◉ **GSM Quarter Band:** Support for GSM networks, while using both the SMS channel and the GPRS/EDGE channels. Supported bands are 850/900/1800/1900 MHz

- ◉ **TCP Connectivity:** Support for the GPRS/1x TCP/IP networks by either staying online at all times, or coming online when a transmission is initiated.
- ◉ **DNS Support:** Connection to a server by its host name
- ◉ **Backup Server:** Backup host name support in case of main server has gone offline.
- ◉ **Encryption:** Protocol encryption to provide maximum security between the vehicle and the center.
- ◉ **External Protocol Support:** Support for external devices for 3rd party protocols, such as text terminal or RFID readers.
- ◉ **Navigation Support:** Support for external devices for navigation, such as handheld or laptop computers.
- ◉ **Compact Protocol:** Less than 70 bytes per message enables very small bandwidth usage and saved communication costs.
- ◉ **Voice Calls:** Hands-free kit to support voice call from and to the vehicle.
- ◉ **Zigbee Connection:** 2.4GHz Zigbee Radio protocol to support connecting to sensor over RF, and transmitting of packets to central stations without the use of the cellular network.
- ◉ **Internet Connection:** Support for direct modem access to initiate an internet connection by connecting a handheld or a laptop device to the device.

Over-The-Air commands

- ◉ **Firmware Upgrade:** Over the air firmware upgrade to apply new features to already-installed units.
- ◉ **Status Requests:** Ability to request for the latest status of the vehicle, and receives the entire information about all the inputs, outputs, and location information.
- ◉ **Tracking:** Option to remotely engage periodic transmissions from the unit in the intervals of 10 seconds up to 5 days.
- ◉ **Tracking Interval By Channel:** Different transmissions intervals can be set to each communication channel used –SMS/GPRS/EDGE/Roaming.
- ◉ **Parameters Programming:** Complete programming of each and every one of the unit's parameters over the air.

- ◉ **Remote Arm/Disarm:** Option to arm or disarm the vehicle from the center.
- ◉ **Output State Changing:** Option to remotely activate different outputs, such as locking/unlocking the doors, starting the siren, activating the immobilizer.
- ◉ **Learn Dallas/Remote Control:** Remote activation of extra Dallas iButton and Remote Control.
- ◉ **Mileage setting:** Remote update to synchronize the unit and the vehicle internal mileage counter.
- ◉ **Voice Call Request:** Request the unit to call a specific number for a voice call to communicate with the driver and/or hear the activity inside the vehicle.
- ◉ **Text Messaging:** Send a text message directly to the vehicle's text terminal.

Miscellaneous

- ◉ **Garage Mode:** Special condition in which the alarm system is turned off and no emergency transmission are sent. This condition is time-limited.
- ◉ **Internal Logging:** Whenever a transmission was failed to be sent, the entire message is saved to the memory for later transmission. 50 thousands complete messages including statuses can be recorded this way.
- ◉ **Low Power Mode:** Option to switch to a low power mode (up to 14mA) whenever the alarm system is armed.
- ◉ **Fully Certified:** Fully certified and complies with the highest standards of the automotive industry.

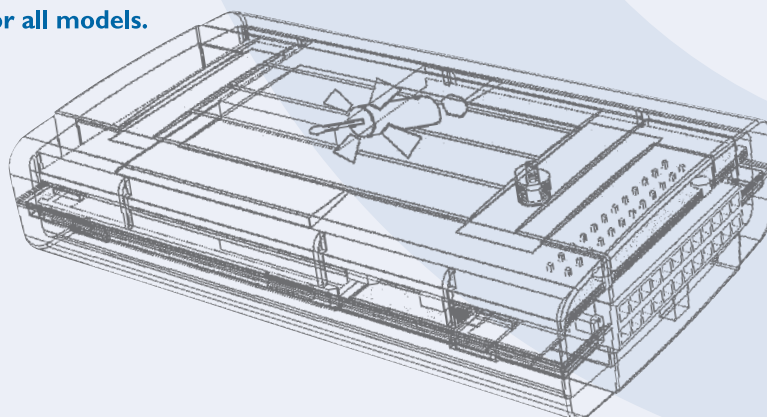
Location

- ◉ **GPS Receiver:** Built in GPS receiver connected to the unit, allowing real-time tracking and on-board location-based analysis.
- ◉ **Mileage by GPS:** Advanced algorithm to calculate the vehicle's mileage based on the GPS, without the need for any external connections to the vehicle's odometer.
- ◉ **Last Location Saving:** Saving of the vehicle's last position, in case of going out of GPS coverage.

Choose the HELIOS that suits your needs:

	HELIOS basic	HELIOS logger	HELIOS advanced
GPS	+	+	+
GSM	+	-	+
ZIGBEE	-	+	Optional
Connector	6 pins, mini USB	24 pins, Molex	24 pins, Molex
I/Os	1 Digital Input 1 Analog Input 1 Digital Output RS232	5 Digital Inputs 4 Digital Outputs 2 Analog Inputs 1 Pulse Counter CANbus Connectivity RS232	5 Digital Inputs 4 Digital Outputs 2 Analog Inputs 1 Pulse Counter CANbus Connectivity RS232
Accelerometer	Optional	Optional	Optional
CANbus	-	+	+
Use	Track and trace, basic functionality	Full fleet tracking functionality w/o GSM communication	Full fleet tracking and security functionality. Can be used as a stand alone alarm system
Advantage	<ul style="list-style-type: none"> - Low cost - Quick installation - Can be used as portable unit and easily moved from vehicle to vehicle 	With no communication and modem costs	most advanced optional for cost reduction on communication

- Backup Battery - optional for all models.



- For further information: www.starcomsystems.com

- For information about accessories: office@starcomsystems.com